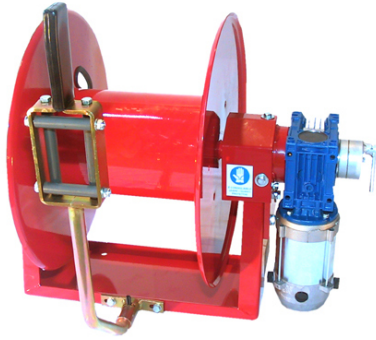


# Hose reel MGE F

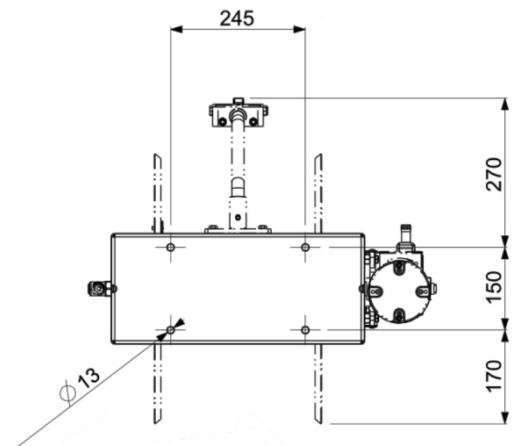
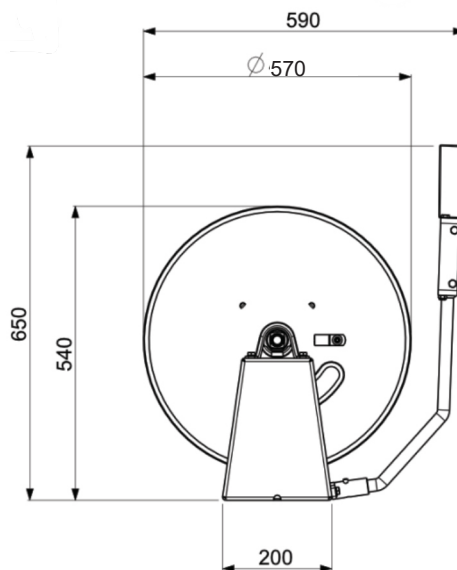
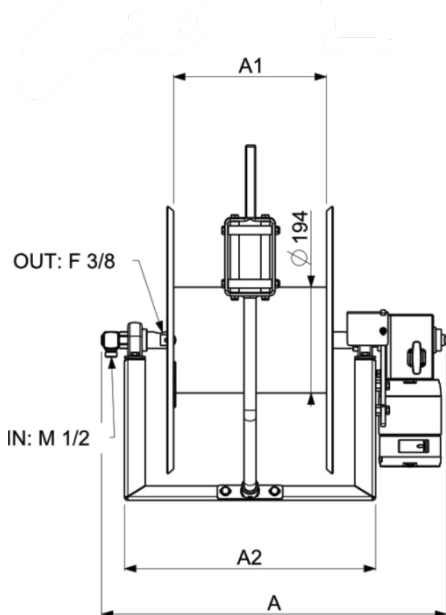


- Electric motor 12V or 24V with manual engageable clutch
- Control box with emergency stop switch
- Wireless remote control: on-off, forward-backward, stepless speed regulation
- Interchangeable battery and charger
- Casing in painted steel
- Axle with ball bearings
- Swivel joint in brass
- Fixed mounting bracket
- Without hose

Item-No.	Designation	Medium	Max. length of the hose	Max. Ø	Max. pressure	Max. temp.	Motor
2.965.100	MGE 124F	Water Pesticides High pressure Diesel Oil	70m 50m	10mm 12,5mm	250bar	90°C	24V
2.965.110	MGE 224F		110m 80m		250bar	90°C	
2.965.120	MGE 324F		160m 110m		250bar	90°C	
2.965.130	MGE 424F		200m 150m		250bar	90°C	

Item-No.	A	A1	A2	kg
2.965.100	615	180	360	30
2.965.110	715	280	460	33
2.965.120	815	380	560	36
2.965.130	915	480	660	39

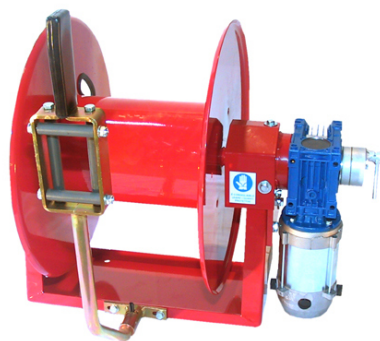
Optional accessories	
Item-No.	Designation
130.006	Roller hose guide outlet with handle



# Hose reel MGE F

# EBINGER

Technisches Equipment

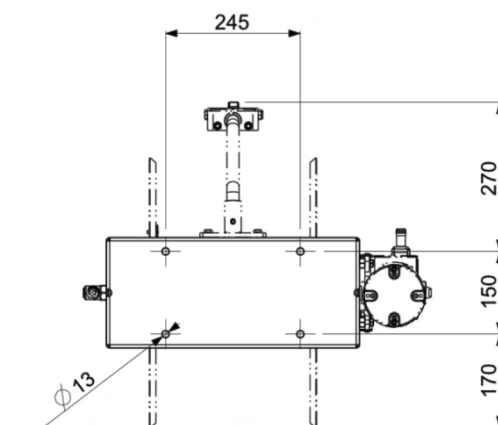
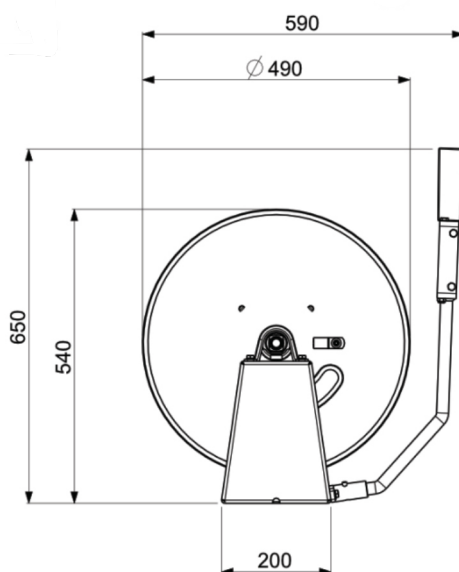
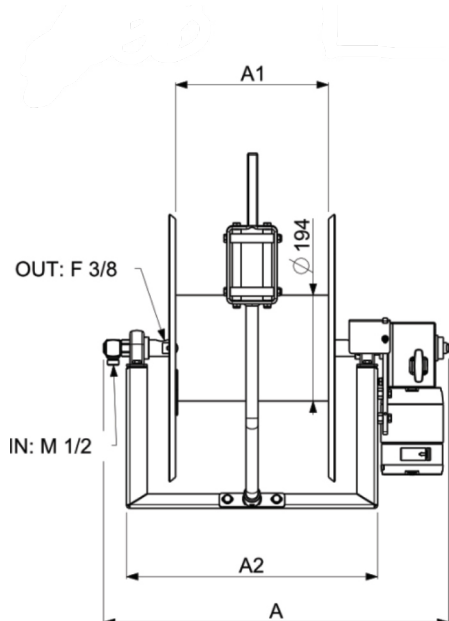


- Electric motor 230/400V with automatic freewheel
- Control box with emergency stop switch
- Wireless remote control: on-off, forward-backward, stepless speed regulation
- Casing in painted steel
- Axle with ball bearings
- Swivel joint in brass
- Fixed mounting bracket
- Without hose

Item-No.	Designation	Medium	Max. length of the hose	Max. Ø	Max. pressure	Max. temp.	Motor
2.969.100	MGE 140F	Water Pesticides High pressure Diesel Oil	70m 50m	10mm 12,5mm	250bar	90°C	230/400V
2.969.110	MGE 240F		110m 80m		250bar	90°C	
2.969.120	MGE 340F		160m 110m		250bar	90°C	
2.969.130	MGE 440F		200m 150m		250bar	90°C	

Item-No..	A	A1	A2	kg
2.969.100	530	180	360	34
2.969.110	630	280	460	37
2.969.120	730	380	560	40
2.969.130	830	480	660	43

Optional accessories	
Item-No.	Designation
130.006	Roller hose guide outlet with handle



# EBINGER

Technisches Equipment

**Ebinger GmbH**  
Edesheimer Straße 51  
D-76835 Rhodt /  
Germany

Fon +49 (0)6323-937 465-0  
Fax +49 (0)6323-937 465-20

info@ebinger-gmbh.com  
www.ebinger-gmbh.com

