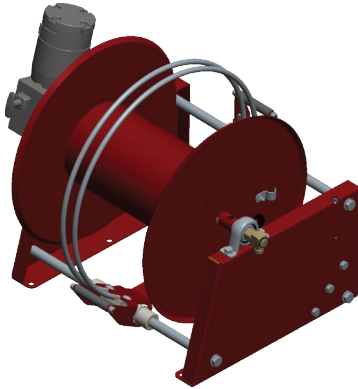
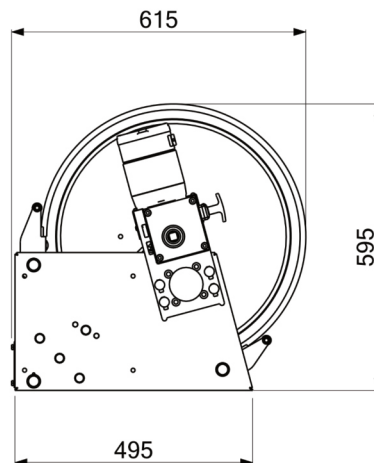
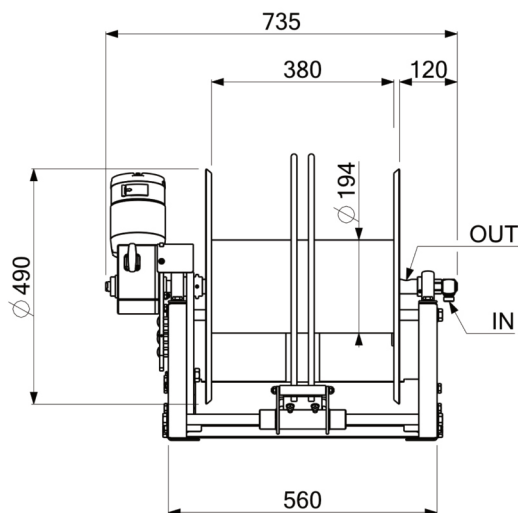
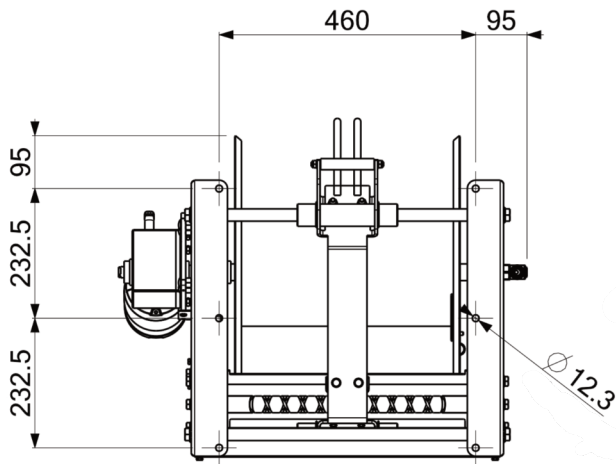


Hose reel MGTE F



- Electric motor 24V with manual engageable clutch
- Control box with emergency stop switch
- Wireless remote control: on-off, forward-backward, stepless speed regulation
- Interchangeable battery and charger
- Casing in painted steel
- Axle with ball bearings
- Swivel joint in brass
- Automatic hose guide
- Fixed mounting bracket
- Without hose

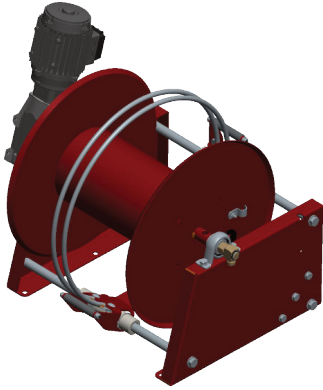
| Item-No. | Designation | Medium | Max. length of the hose | Max. \varnothing | Max. pressure | Max. temp. | Motor |
|-----------|-------------|---|-------------------------|--------------------|---------------|------------|---------------|
| 2.968.122 | MGTE 124F | Water Pesticides High pressure Diesel Oil | 160m 110m | 10mm 12,5mm | 250bar | 90°C | 24V (30U/min) |



Hose reel MGTE F

EBINGER

Technisches Equipment



- Electric motor 230/400V with automatic freewheel
- Control box with emergency stop switch
- Wireless remote control: on-off, forward-backward, stepless speed regulation
- Casing in painted steel
- Axle with ball bearings
- Swivel joint in brass
- Automatic hose guide
- Fixed mounting bracket
- Without hose

| Item-No. | Designation | Medium | Max. length of the hose | Max. Ø | Max. pressure | Max. temp. | Motor |
|-----------|-------------|---|-------------------------|----------------|---------------|------------|----------------|
| 2.968.123 | MGTE 323F | Water Pesticides High pressure Diesel Oil | 160m 110m | 10mm 12,5mm | 250bar | 90°C | 230V (27U/min) |

