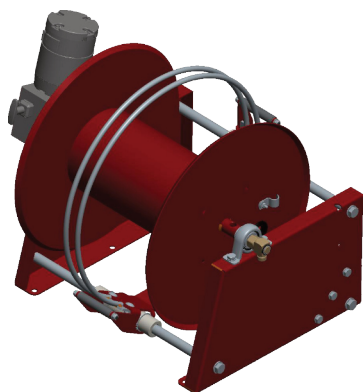


Hose reel MGTE

EBINGER

Technisches Equipment

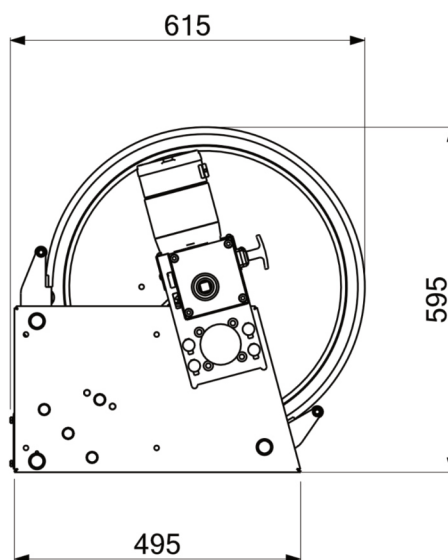
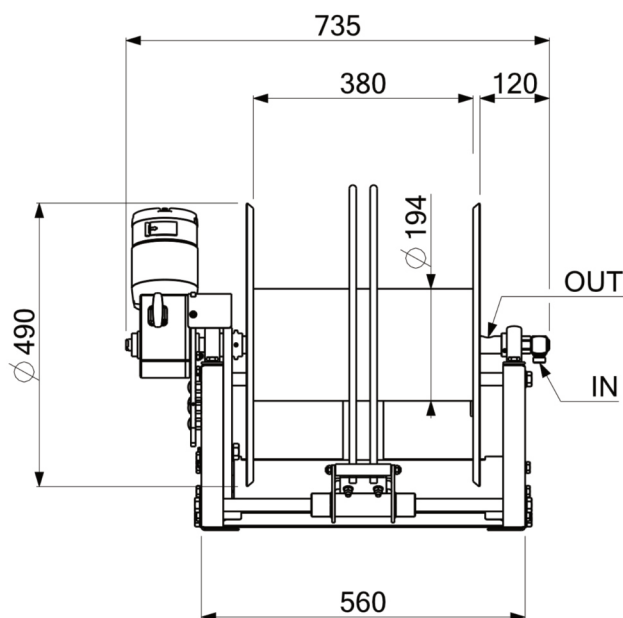
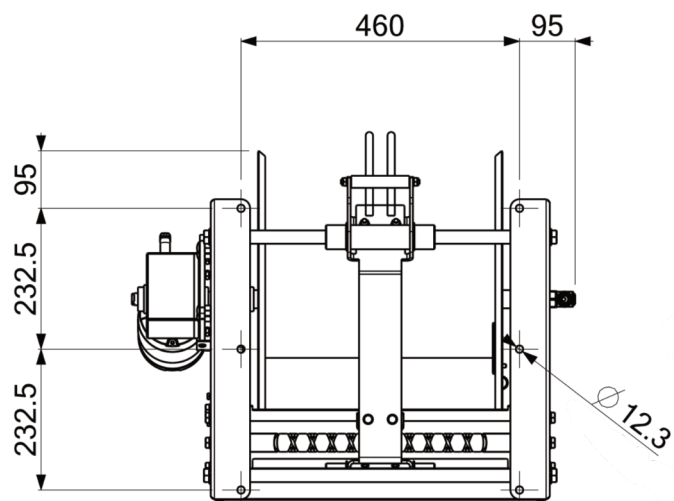


- Electric motor 12V or 24V with manual engageable clutch
- Casing in painted steel
- Axle with ball bearings
- Swivel joint in brass
- Automatic hose guide
- Fixed mounting bracket
- Without hose

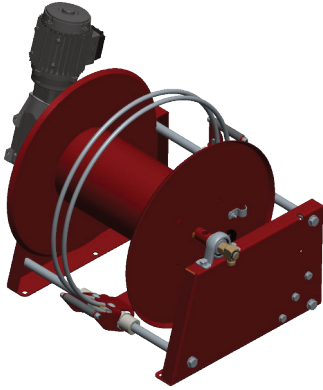
Item-No.	Designation	Medium	Max. length of the hose	Max. Ø	Max. pressure	Max. temp.	Motor
2.968.020	MGTE 312	Water Pesticides High pressure Diesel Oil	160m 110m	10mm 12,5mm	250bar	90°C	12V (30U/min)
2.968.021	MGTE 312		110m 80m	10mm 12,5mm			
2.968.022	MGTE 324		160m 110m	10mm 12,5mm			

Optional accessories

Item-No.	Designation
130.029	Control box, function: rolling in



Hose reel MGTE



- Electric motor 230/400V with automatic freewheel
- Casing in painted steel
- Axle with ball bearings
- Swivel joint in brass
- Automatic hose guide
- Fixed mounting bracket
- Without hose

Item-No.	Designation	Medium	Max. length of the hose	Max. Ø	Max. pressure	Max. temp.	Motor
2.968.023	MGTE 340	Water Pesticides High pressure Diesel Oil	160m 110m	10mm 12,5mm	250bar	90°C	400V (27U/min)

